

Neptune 4 Series PrusaSlicer Parameter Configuration

Import Tutorial

PrusaSlicer software download address

[PrusaSlicer | Original Prusa 3D printers directly from Josef Prusa](#)

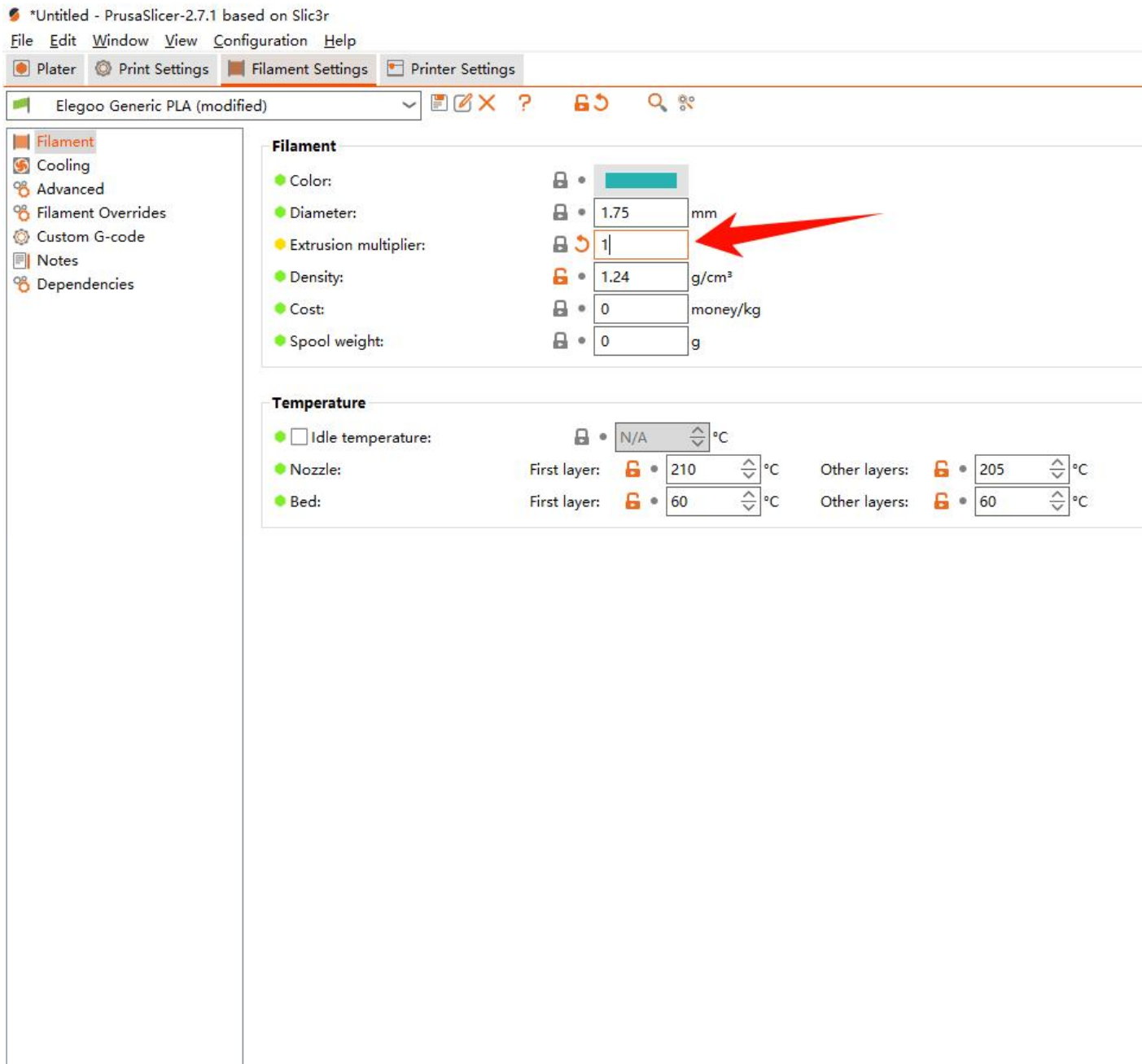
Firmware version

Adapt PrusaSlicer software V2.6.1 and later

Adapt Neptune 4/Neptune 4 Pro: V1.1.2.28 and later

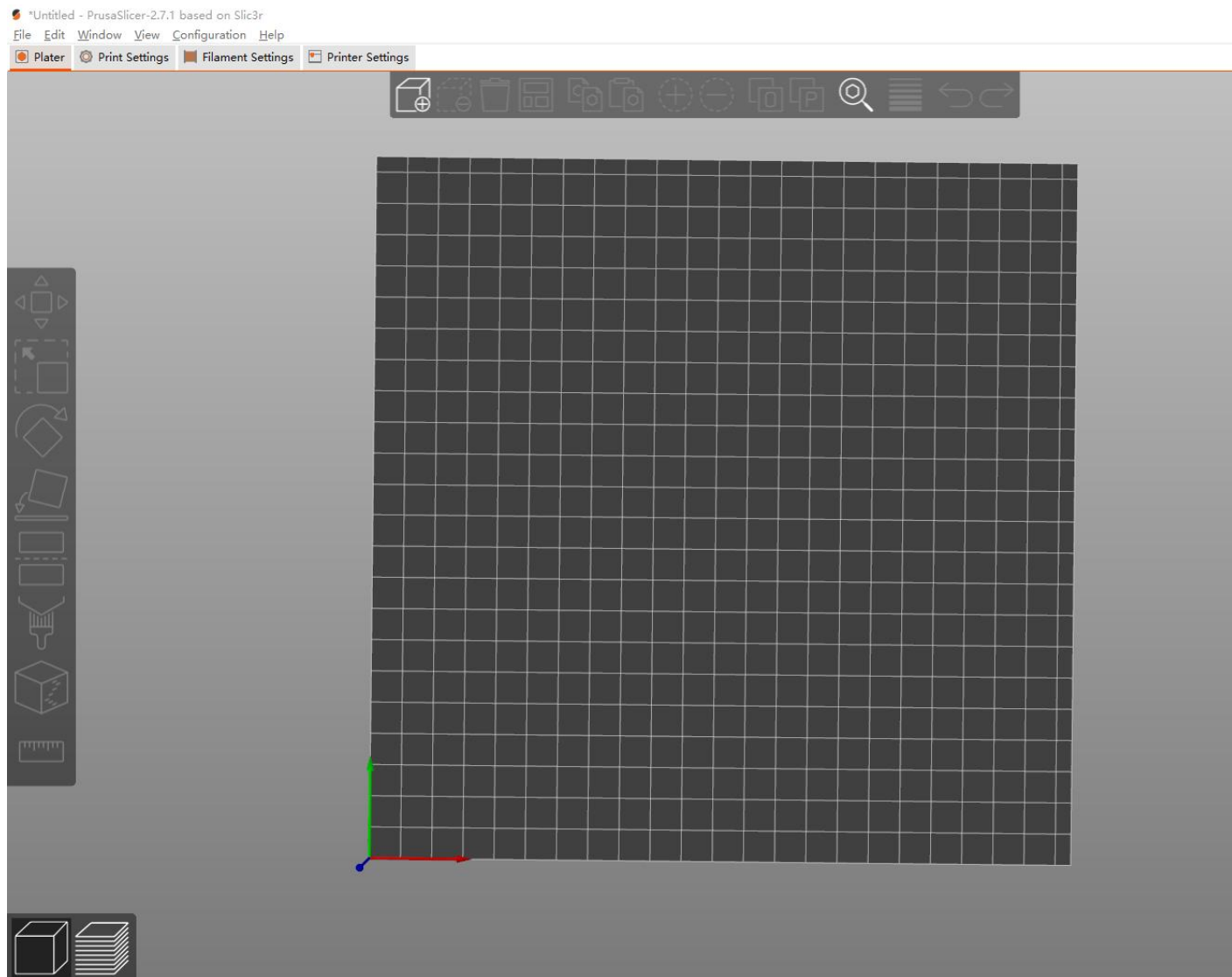
Adapt Neptune 4 Plus/Neptune 4 Max: V1.2.2.30 and later

Note: If the printer firmware version is lower, it is recommended to modify the
[Filament-Extrusion multiplier] to 1 in [Filament Settings] for better printing results.

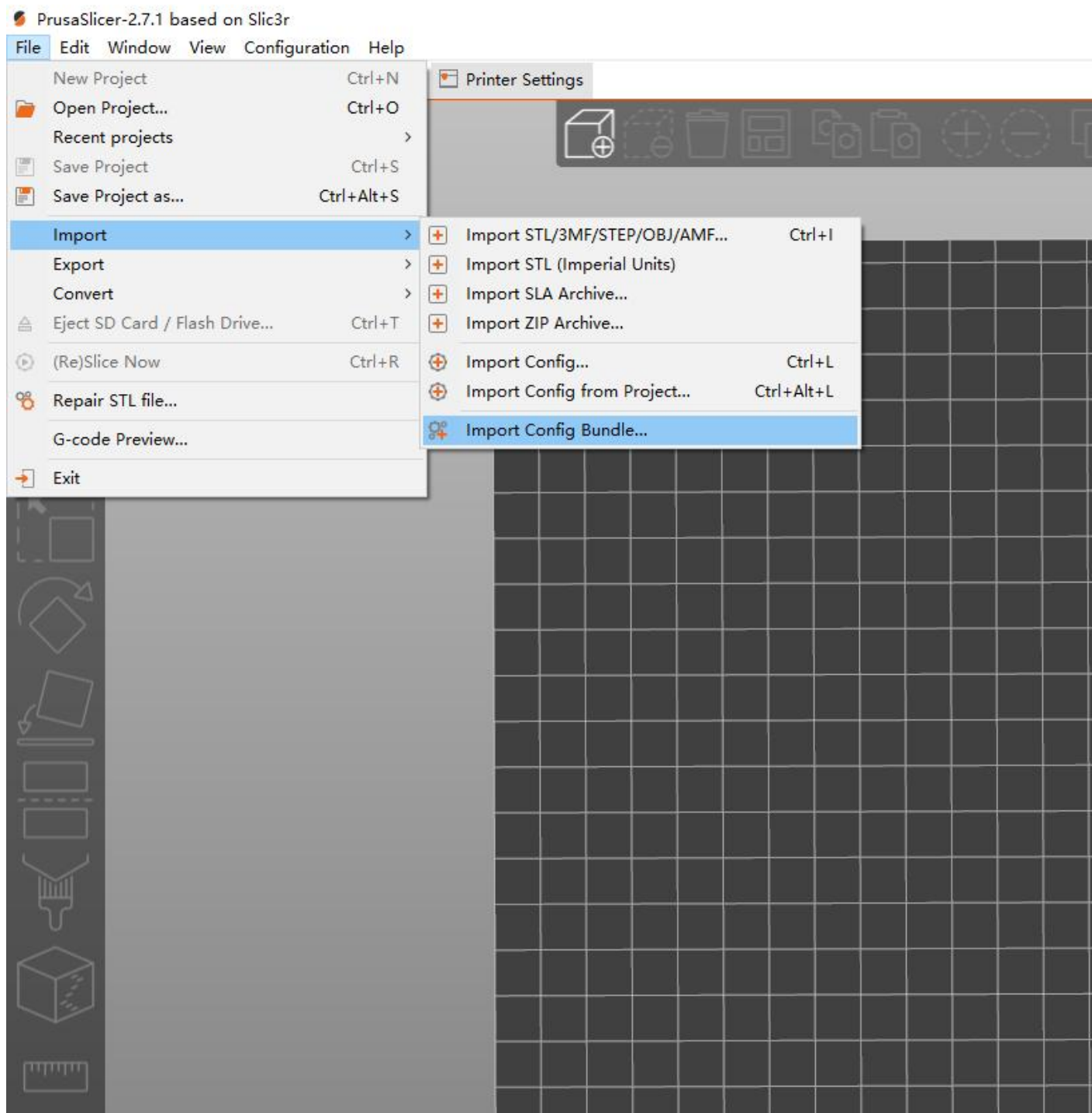


(.ini) configuration file import steps

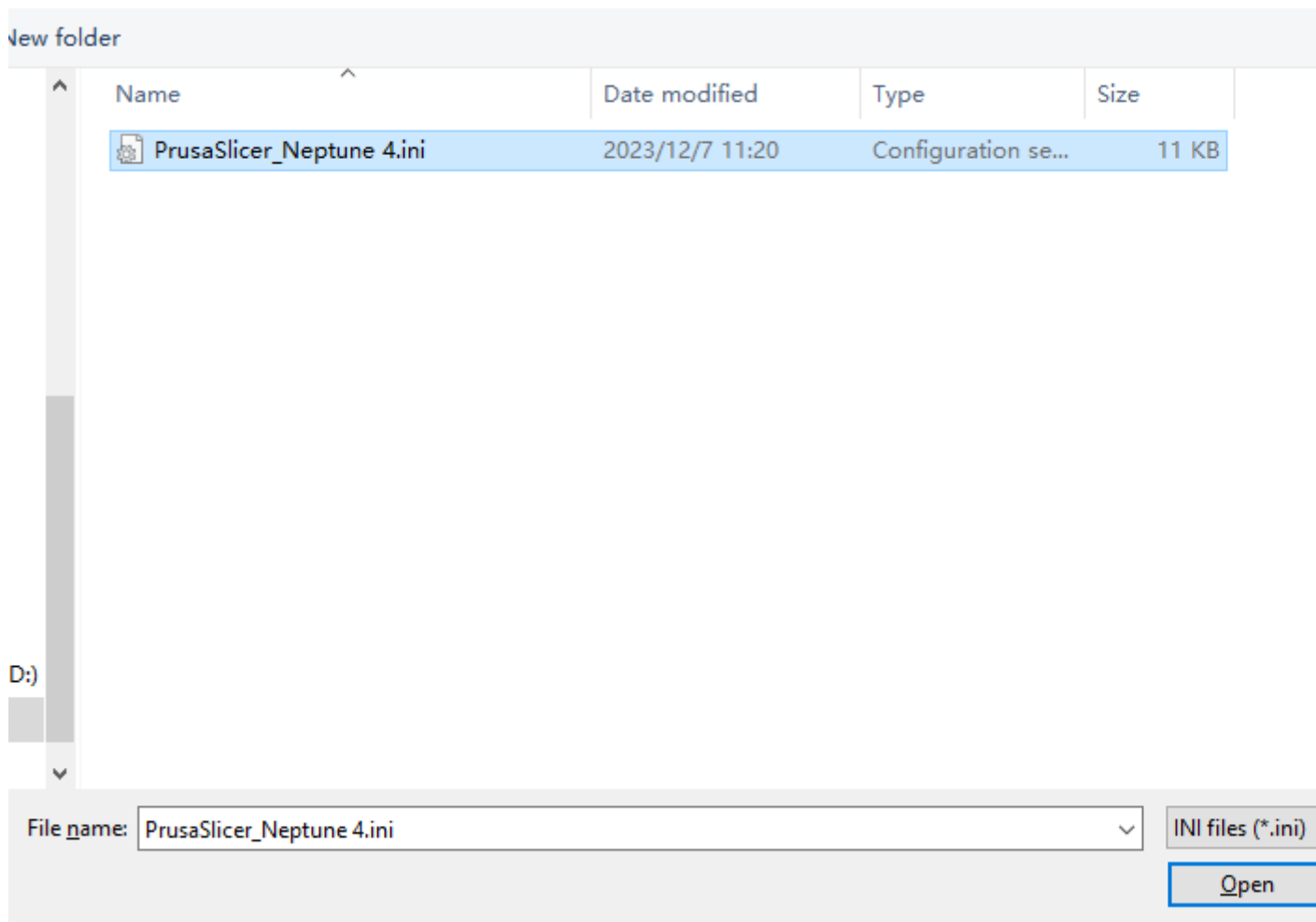
1. After installing PrusaSlicer software, enter the software interface.



2. Click [File-Import-Import Configuration Bundle] in the upper left corner.



3. Select the configuration file (.ini suffix file) corresponding to the model and import it.



4. Printing settings, consumables, and printer configuration parameters will all be imported into PrusaSlicer. Once the import is completed, you can slice and print.

—

📄

✕

● Simple

● Advanced

● Expert

Print settings:

⚙️ 0.2mm Standard @ Neptune4 (0.4 nozzle) ⚙️

Filament:

🟩 Elegoo Generic PLA ⚙️

Printer:

🖨️ Elegoo Neptune 4 ⚙️

Supports: None ⌵

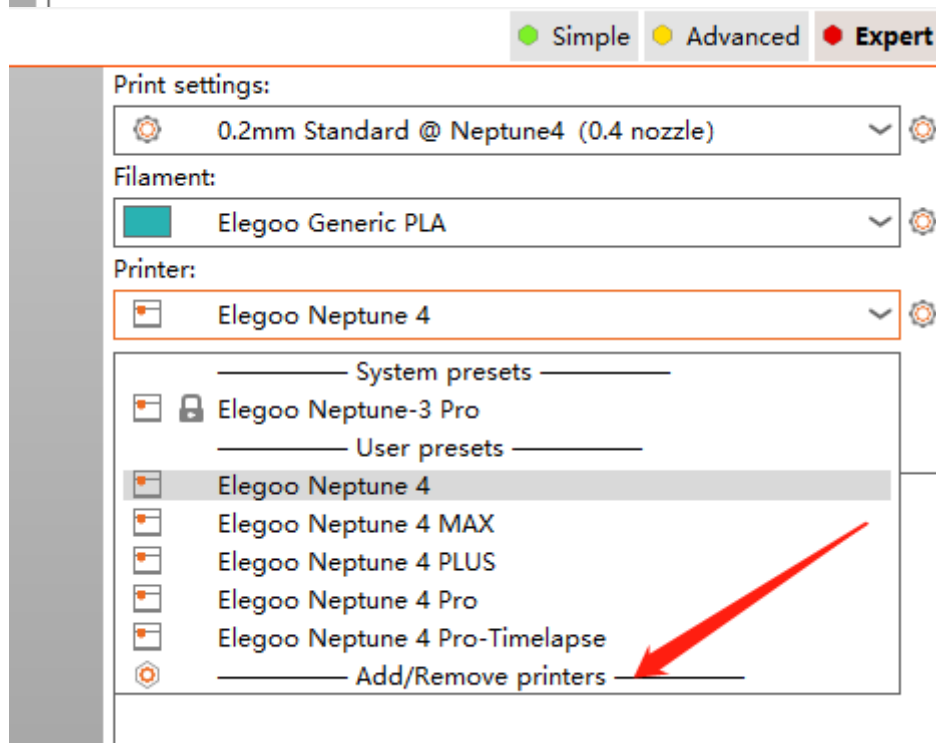
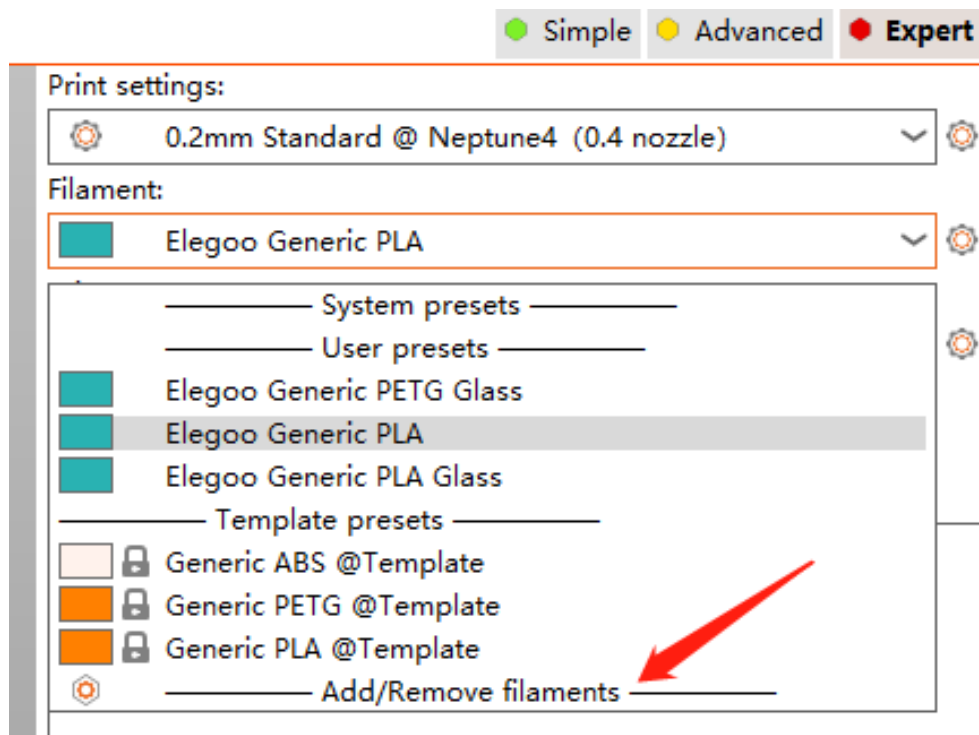
Infill: 15% ⌵

Brim: ☐

Name		Editing
------	--	---------

Note: When printing slices, you need to select the corresponding print settings and consumable parameters of the printer.

- Click the [Add/Remove] option in the drop-down box of [filaments] or [Printer] to enter PrusaSlicer's [Configuration Wizard].



6. Add/remove printer, preset and consumable parameters in [Configuration Wizard].

- Welcome
- Prusa FFF
- Prusa MSLA
- Other Vendors
 - Elegoo FFF
- Custom Printer
- Filaments
- Updates
- Downloads
- Reload from disk
- Files association
- View mode

Elegoo FFF Technology Printers

NEPTUNE Family



Elegoo Neptune-1

☐ 0.4 mm nozzle



Elegoo Neptune-2

☐ 0.4 mm nozzle



Elegoo Neptune-2D

☐ 0.4 mm nozzle



Elegoo Neptune-3

☐ 0.4 mm nozzle



Elegoo Neptune-3 Max

☐ 0.4 mm nozzle



Elegoo Neptune-3 Plus

☐ 0.4 mm nozzle



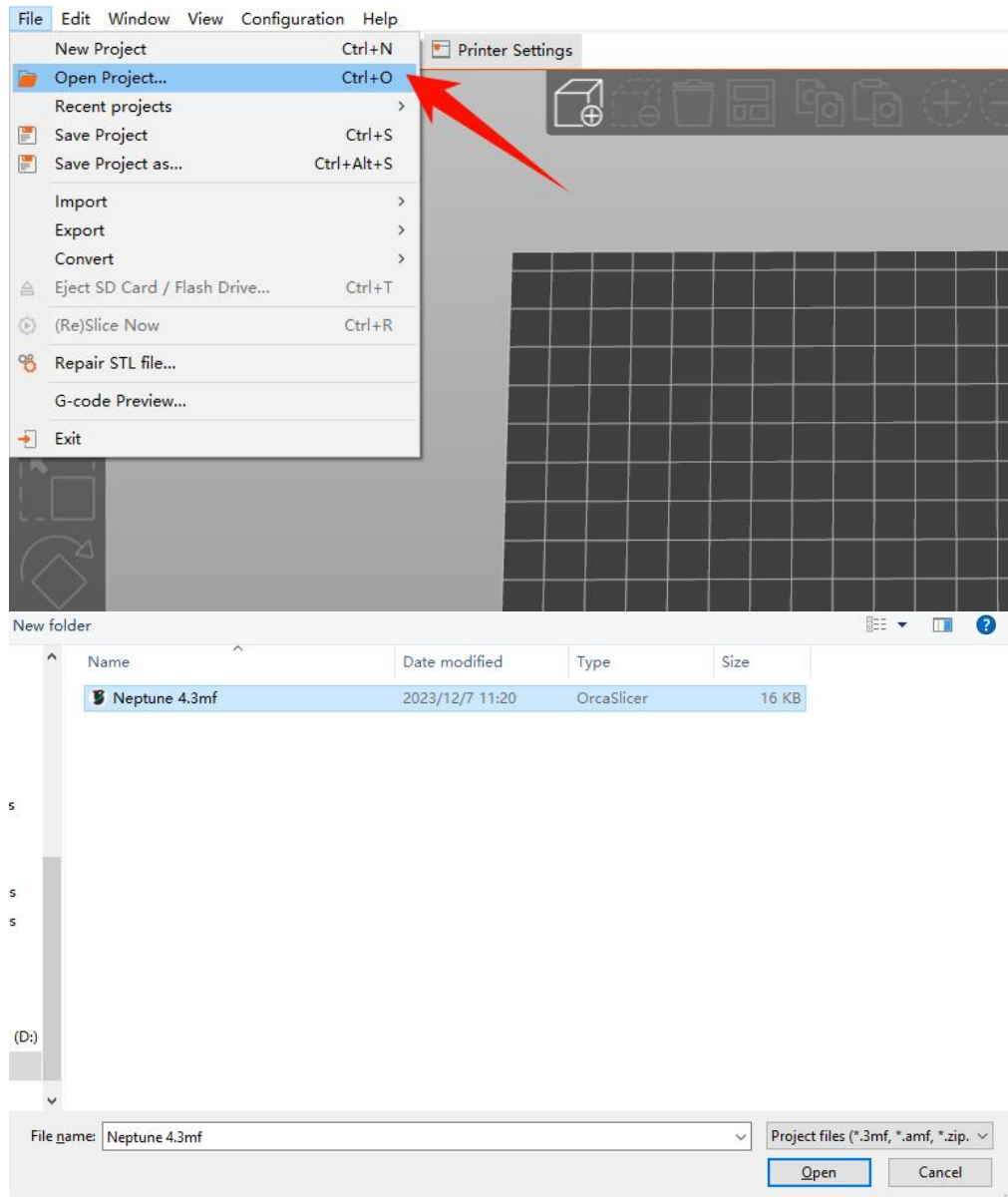
Select all standard printers

3mf file usage tutorial

Considering the functional differences between different versions of PrusaSlicer software, a common 3mf file for PrusaSlicer is made, so that you can use 3mf to slice and print even if you can't import the configuration.

1. Click [File-Open Project] in the upper left corner, select the 3mf file corresponding to the

model, and open it. Import the model and then slice and print it.



2. You can also directly drag the 3mf file into PrusaSlicer to open it, import the model and then slice and print it.



PrusaSlicer - Load project file

Select an action to apply to the file: Neptun

Action

- ☒ Open as project
- ☐ Import 3D models only
- ☐ Import config only
- ☐ Start new PrusaSlicer instance

☐ Don't show again

OK

